

**Shenzhen Runtianzhi Image Technology Co., Ltd is located in Guanlan Hi-tech Industry Park, Baoan District.. It occupies a lot area of 10,250 square meters for the first two building project which was finished in June 2005, The third building which will be occupying 6,000 sq meters will be finished built soon, totaling to more than 16,000 sq meters..**



# *PP2512UV* *Digital Flatbed UV printer*



**8 Colors options**  
**14pl of Konica Minolta 512 heads**

## PP2512UV

### Technical Specifications

#### *Printhead Setup*

*15 Piezo Electric drop-on-demand Konica Minolta print heads can print 14pL nominal drop sizes for 512 nozzles running at 7.6 KHz.*

*The printhead is designed to have a “wing” structure so that users can precisely align the print heads without difficulty.*

*Excellent dot placement accuracy*

#### **Resolution**

*360 x 360 dpi  
720 x 720 dpi  
1440 x 1440 dpi*

#### **Colors**

*CMYK + White + LC/LM + Vanish  
8 colors options*

#### **Speed**

*19.4 sq m /hour Ultra Quality  
25.8 sq m /hour High Quality  
38.8 sq m /hour Standard Quality*

*Maximum media width: 1.22m x 2.54m*

*Maximum printing width: 1.2m*

*Maximum media thickness: 10cm*

#### **Media Types**

*Rigid Media including corrugated boards, Fome-cor, plywood, ceramics, aluminum, PVC, acrylic, glass, sheet metal, gatorboards, etc.*

*Roll media including flex banners, paper, adhesive back vinyls, leather, fabrics, et*

## Advantages of FLORA PP 2512UV

**1. High Resolution and Brilliant Quality Images Output Equipped with 8 x 16 Konica Minolta Piezo printheads with a small droplet of 14 pl, new advanced PP2512UV delivers high resolution at true 720 dpi quality images with YMCK four-color model and apparent 1440 dpi when using Lc and Lm. This allows users to produce a more refined image output and extend their application.**

**Ultra high resolution  
1440 x 1440 dpi**



## 2. Customer Oriented Variable Color Configuration + Easy Upgrade

PP2512UV offers variable color configuration to satisfy various customers' needs with optional combination of inks and printhead (P/H) channels. Such as YMCK, in 8 P/H; YMCKW, in 10 P/H for printing on dark/transparent media; YMCKLcLm, in 12 P/H for higher resolution; YMCKLcLmW, in 14 P/H; YMCK in 16 P/H for mass production; or YMCKLcLmW, in 16 P/H for extra ordinary mass special application.

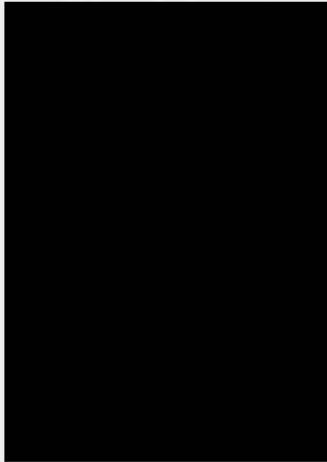


### **3. Dedicated White Ink**

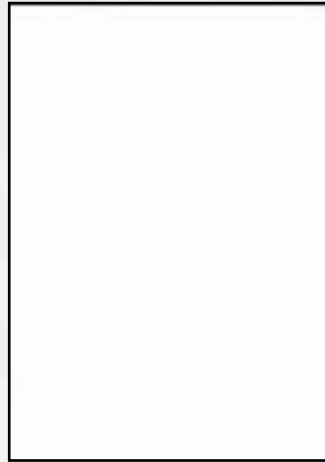
***PP2512UV offers eight major utilizing white ink applications as a base, overcoat, fill color, underspot color, overspot color, spot color etc Applying white ink is the most common application for dark or transparent substrates to highlight and present the most vivid of graphic.***



**a. Base color**



**1-Printing on Black Media**



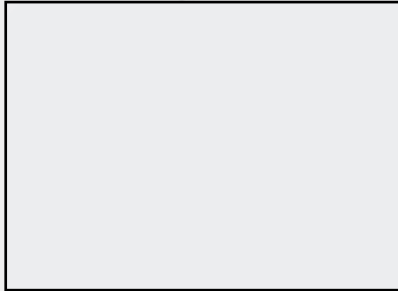
**2-White was printed as a background**



**3-Final Art**



## b. Overcoat mode



**1-Printing on  
Transparent Media**



**2-CMYK Layer was  
mirrored for printing  
transparent media**



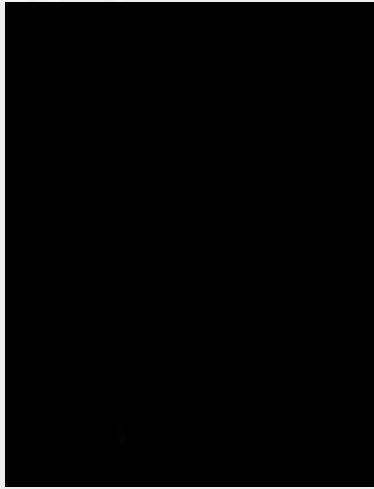
**3-White color was printed  
to overcoat the whole  
image as a background**



**4-Final art when  
looking from the  
other side**



### c. Spot White



1-Printed on blackground media



2-Spot White was Printed seperate



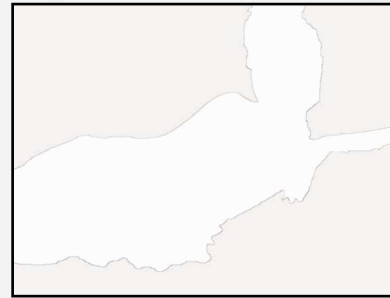
## d. Spot White Over



**1-Printing on  
Transparent Media**



**2-CMYK Layer was  
mirrored for printing  
transparent media**



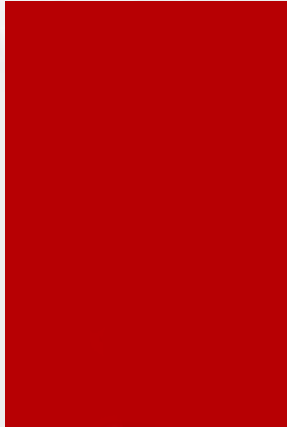
**3-White color was printed  
to overcoat the whole  
image as a background**



**4-Final art when  
looking from the  
other side**



## e. Spot White Under Mode



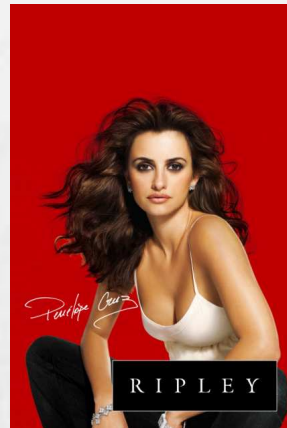
1-Red Acrylic Media



2-The spot white was printed under the body profile to create more details



3-Final art



## 4. Three Layers Printing Innovation

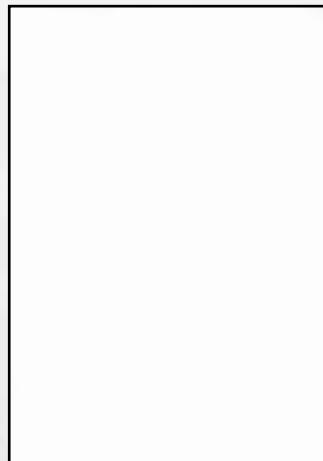
- **Three layers (such as: CMYK + W + CMYK) printing intellectualized controlled by software, which can carry out synchronously double side printing on any transparent Substrate.**



### f. Three Layer



1-CMYK layer was printed



2-White was printed in the middle as a background for dual image

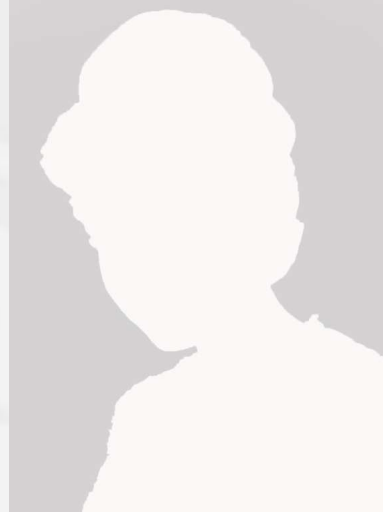


3-Final Art

## g. Spot White three layer



1-First CMYK layer was printed



2-Spot White was printed in the middle to active more saturation on body profile in dual printing



3-Final art shows more saturation on body profile



## 5. Varnish Solution

*PP2512UV's optional varnish not only enhances the visual quality but also creates the tactile attribute of graphics. Users are able to apply varnish directly on graphics via printheads as either an all-over coating, or as a spot-highlighting, giving your printings more vivid and brighter finish.*





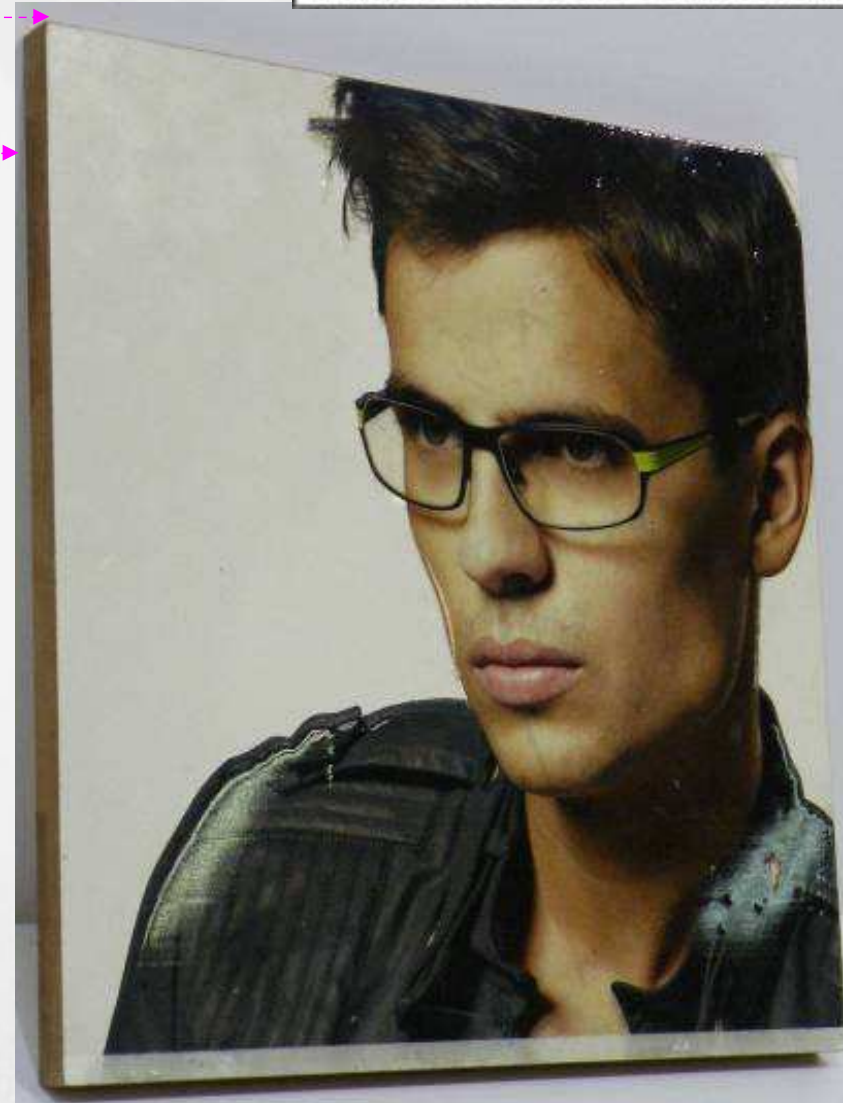
### 6. Automatic Anti-crash Sensor

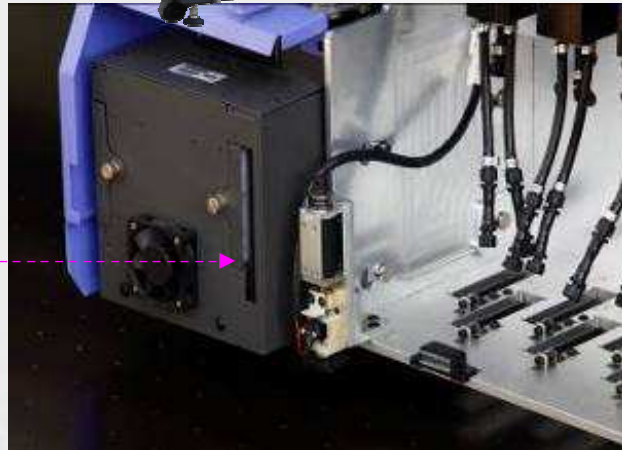
The safety anti-crash sensor design can detect the media circumstance beforehand and protect the print heads from a crush hazard. While the anti-crash sensor detects that the edge of media is cocked, the machine will initiate an emergency stop to prevent print head from damage.

100mm

### **7. Acceptable media thickness up to 100 mm**

*PP2512UV processes media thickness up to 100mm allows for printing across a wide variety of rigid and flexible substrates that is ideal for applying to the several industries, such as, building materials, furniture, and point-of purchase etc.*



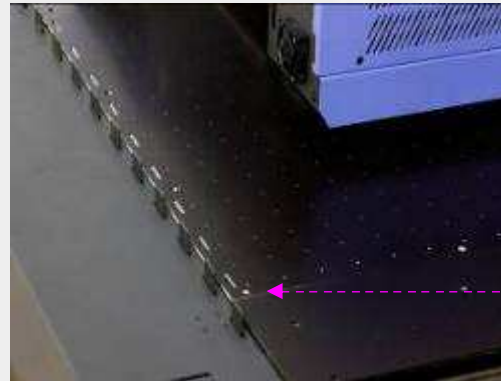


## 8. Auto Media Calibration

The auto media calibration pin automatically detects and gauges the distance between the print heads and loaded media then automatically adjusts to the optimized print height based on the thickness of the loaded media.

### 9. Automatic Registration Pin System

Automatic registration pin system aid easy edge to edge printing, which simplifies the media location and ensure the high precision printing output.





### 10. Auto Cleaning System



Auto cleaning system allows the print head auto wiping and sucking controlled by software or panel, which makes the print head cleaning much more simple and timesaving.

## 11. Individual Purge System

Individual Purge System allows purging the specific single ink channel for ink cost saving purpose.



## 12. White Ink Recirculation

PP2512UV offers eight major utilizing white ink applications. White ink recirculation results in an effective elimination of ink starvation and protects print heads from clogging hazard

## Printing on film 2



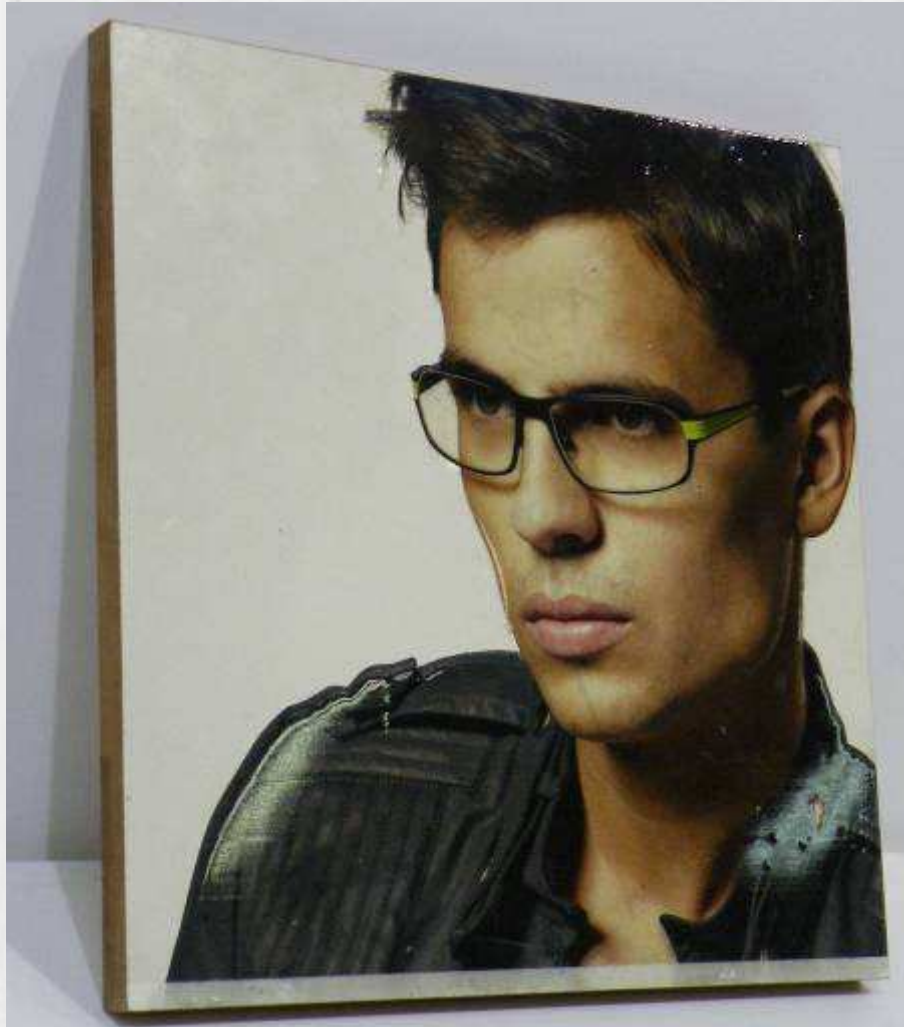
## Printing on film with spot white



## Printing on Football leather



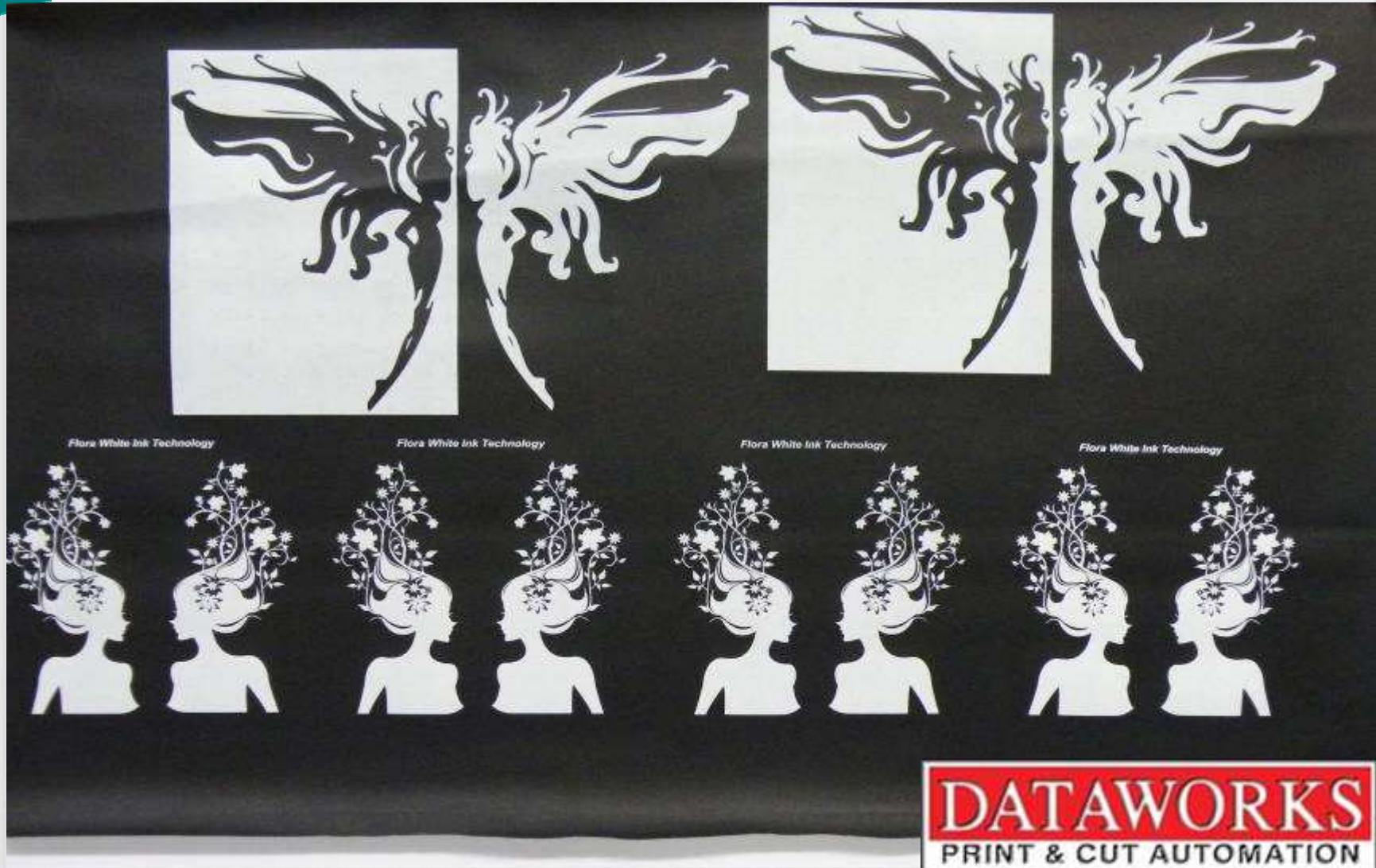
## Spot Varnish on Wood



## Spot Varnish on Acrylic



## Spot White Printing on leatheroid



## Printing directly on Ceramic



## Printing directly on Aluminous board



## Printing directly on NotePC cover



## Printing directly on NotePC cover



- **GENERAL INFORMATION**

**Printing methods:** Drop-on-demand piezo electric  
**Ink Reservoirs:** Refillable on the fly while printing/4000ml per color  
**Ink characteristics:** UV curable inks  
**Print head controls:** Print head temperature and voltage are software adjustable  
**Media handing options:** Rigid sheets  
**Drying system:** UV lamps  
**RIP software:** Photoprint 6.1 Flora Edition  
**Color management:** ICC based color, adjustment curves, density adjustment  
**File formats:** TIFF, JPEG, Postscript 3, EPS, PDF, etc.  
**Electrical requirements:** 50Ha/60Hz, 220V  $\pm 10\%$  20A  
**Environmental requirements:** Ambient temperature 18 -30° Relative humidity 40 -70%  
**Warranty:** 1 year (pls consult your local dealer for details)

**Agency Compliance**  
CE Certified

**Physical Dimensions**

**Weight:** ..... 1600 kgs.  
**Length:**..... 4.5 m  
**Width:**..... 1.95 m  
**Height:**..... 1.3 m



## Shenzhen Runtianzhi Image Technology Co., Ltd

