

**GCC LaserPro**

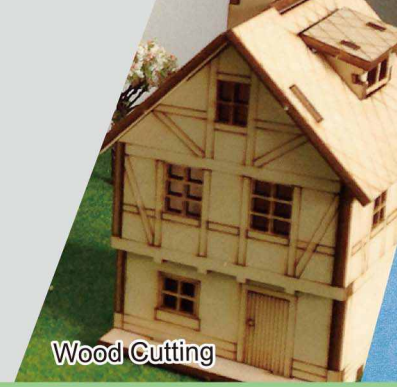
# **MG380Hybrid**

Enjoy the best combination of CO<sub>2</sub> laser technologies



## **MG380Hybrid**

- 38" x 24" (960 x 610 mm) working area
- Closed-loop DC servo control for precise and rapid movement of the laser carriage
- MG380Hybrid model for versatile cutting and engraving applications
- Reliable RF driven metal laser and DC CO<sub>2</sub> glass laser tube
- Pass-through doors for cutting of oversized objects
- Uniquely innovative user-friendly features



## Laser Cutter

# GCC L



### GCC LaserPro MG380Hybrid

The GCC LaserPro MG380Hybrid is equipped with metal laser tube and glass laser tube at the same time which allow user to produce superior engraving and cutting work piece. All in one machine save your storage space and make your profit maximum. The GCC LaserPro users always have an edge over the others with numerous uniquely innovative and user friendly features.

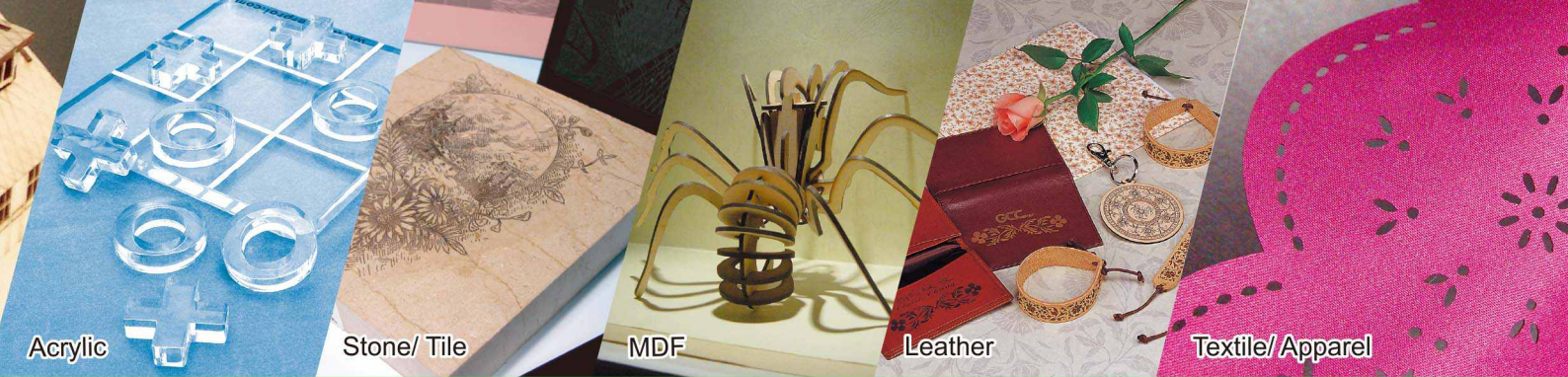
### Superb Engraving and Cutting Quality

Embrace total solution in one machine. Innovative GCC LaserPro MG380Hybrid deliver superior engraving and cutting result by its high end technology.



### Programmable Origin

Easy-to-use position modes allow the operator an effortless way to setup a job with Drag-N-Engrave. Repetitive workflows can be drastically simplified by relocating the origin position to any desired location.



Acrylic

Stone/ Tile

MDF

Leather

Textile/ Apparel

# LaserPro MG380Hybrid

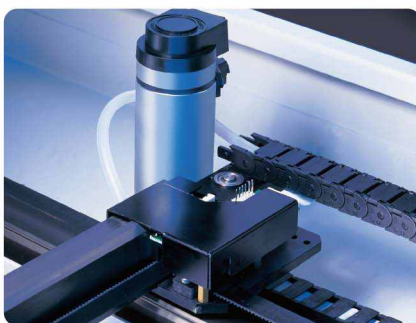
## Emergency Stop

Big red button located on the top of the machine allows operators to stop the laser and the motion carriage immediately to provide a highly safe operational environment.



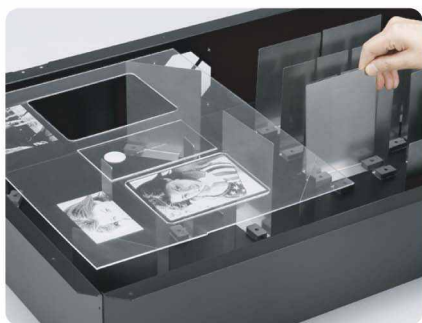
## Motion System with DC Servo Motor

The GCC LaserPro MG380Hybrid utilizes a high speed closed-loop DC servo motor for precise and fast carriage movement to ensure exceptionally accurate cutting outputs.



## Autofocus

Patented Autofocus adjusts the laser engraver to the precise focal point on the engraving area automatically. The Autofocus is the most effective lens-focusing tool that prevents human error.



## SmartBOX™ (Optional)

This innovative design is composed of a ventilation box, a honeycomb table and easily rearrangeable magnetic supporting pieces. The SmartBOX™ provides great cutting quality and remarkably enhances air extraction.



## Pass-Through Front and Rear Doors

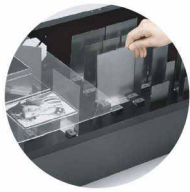
This convenient front and rear door design enables operators to load extremely long working pieces.



## Easy-to-use Control Panel

Designed for simplifying complex tasks, the GCC LaserPro MG380Hybrid's user-friendly interface is a great facilitator to provide powerful function settings.

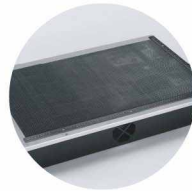
## Optional Items



SmartBOX™ Cutting  
Accessory



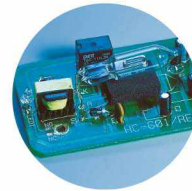
Air Compressor Unit



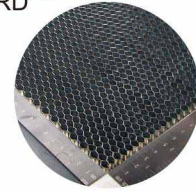
SmartBOX™



Air Extraction System



SmartGUARD™



Honeycomb Table

Specification		MG380Hybrid	
Model Name		<b>MG380Hybrid-12100</b>	<b>MG380Hybrid-25100</b>
Wattage		Metal laser tube : 12W Glass laser tube:100W	Metal laser tube : 25W Glass laser tube:100W
Laser Source		Sealed CO <sub>2</sub> Laser	
Cooling		Metal tube: Air-cooled / Glass tube: Water-cooled	
Working Area		38 x 24 in. ( 960 x 610 mm )	
Max. Part Size (W x L x H)	All doors closed	41 x 25 x 6.5 in. ( 1041 x 635 x 165 mm )	
	All doors open	41 x ∞ x 6.5 in. ( 1041 x ∞ x 165 mm )	
Table Size		42.7 x 29.5 in. ( 1085 x 750 mm )	
Dimensions		68.9 x 48.9 x 40 in. (1750 x 1242 x 1017 mm)	
Driver		Closed-loop DC servo control	
Maximum Cutting Speed*		40 IPS	
Speed Control		Adjustable from 0.1~100% ( Up to 16 color-linked speed settings per job )	
Power Control		Adjustable from 0~100% ( Up to 16 color-linked speed settings per job )	
Distance Accuracy		0.254 mm or 0.1% of move, whichever is greater	
Z-Axis Movement		Automatic	
Computer Interface		Standard printer port and USB 2.0** adaptor	
Safety		Class I Laser Product Compliant with EN60825 Class II Laser Product Compliant with CDRH	
<b>Facility Requirements</b>			
Operation Voltage		200-240 Volt AC	
Power Consumption		1540W	
Water Chiller		Water Chiller required	
Air Exhaust System		External exhaust system required	

\* Speed does not equal to throughput. See dealer or visit [www.GCCworld.com](http://www.GCCworld.com) for more details.

\*\* File transmission at USB 2.0 Full Speed rate.

△ Specifications are subject to change without prior notice.

■ TW Patent I430864.

■ US Patent 8,748,775 B2.

Authorized Dealer



[www.GCCworld.com](http://www.GCCworld.com)



GCC Headquarters 4F-1., No.236, Fude 2nd Rd., Xizhi Dist., New Taipei City 22151, Taiwan 886-2-6616-6692 Fax : 886-2-2694-6875  
 GCC China No.1, Chen Feng Road, Yushan, Kunshan, Jiangsu 215300, China 86-512-5726-1515 Fax : 86-512-5726-1518  
 GCC Europe B.V. Eglantierbaan 43-45, 2908 LV, Capelle a/d IJssel, The Netherlands 31-10-458-9367 Fax : 31-10-451-9874  
 GCC America, Inc 323 Paseo Tesoro, Walnut, CA 91789, USA 1-909-718-0248 Fax : 1-909-718-0251  
 US & Canada Only Toll Free: 1-888-284-5211