

# GCC LaserPro X380

Professional Cutting Performance at The Best Value



## X380

- 38" x 24" (960 x 610 mm) working area
- Closed-loop DC servo control for precise and rapid movement of the laser carriage
- X380RX model for versatile cutting and engraving applications
- Reliable DC excited CO<sub>2</sub> laser
- Pass-through doors for cutting of oversized objects
- Uniquely innovative user - friendly features



Wood Cutting

## Laser Cutter

**GCC**



### GCC LaserPro X380

The GCC LaserPro X series offers an economical alternative for laser cutting and engraving. The GCC LaserPro X380 series is equipped with dependable sealed CO<sub>2</sub> laser which offers a reliable source of laser power for mass production requirements. GCC LaserPro users always have an edge over the others with numerous uniquely innovative and user friendly features.

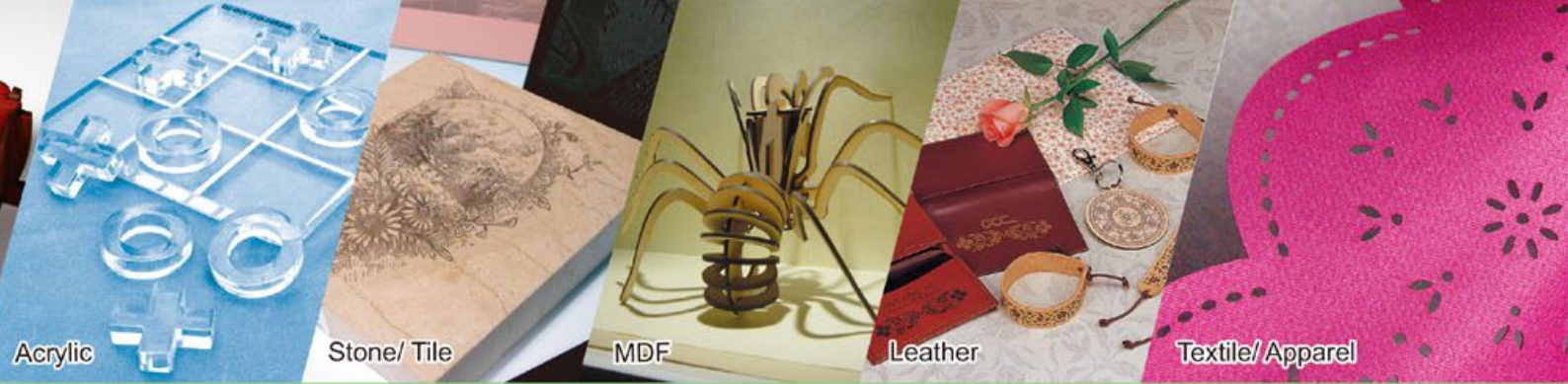
### Easy-to-use Control Panel

Designed for simplifying complex tasks, the GCC LaserPro X380's user-friendly interface is a great facilitator to provide powerful function settings.



### Programmable Origin

Easy-to-use position modes allow the operator an effortless way to setup a job with Drag-N-Engrave. Repetitive workflows can be drastically simplified by relocating the origin position to any desired location.



# LaserPro X380

## Emergency Stop

Big red button located on the top of the machine allows operators to stop the laser and the motion carriage immediately to provide a highly safe operational environment.

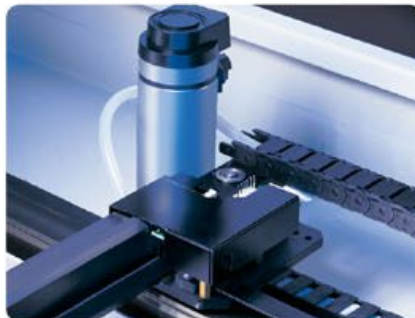


## SmartBOX™ (Optional)

This innovative design is composed of a ventilation box, a honeycomb table and easily rearrangeable magnetic supporting pieces. The SmartBOX™ provides great cutting quality and remarkably enhances air extraction.

## Motion System with DC Servo Motor

The GCC LaserPro X380 utilizes a high speed closed-loop DC servo motor for precise and fast carriage movement to ensure exceptionally accurate cutting outputs.



## Pass-Through Front and Rear Doors

This convenient front and rear door design enables operators to load extremely long working pieces.

## Autofocus

Patented Autofocus adjusts the laser engraver to the precise focal point on the engraving area automatically. The Autofocus is the most effective lens-focusing tool that prevents human error.



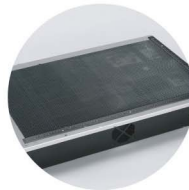
## Superb Cutting Quality

As a transcendent professional laser cutting system, the GCC LaserPro X380 is capable of various cutting applications and able to yield excellent cutting edges.

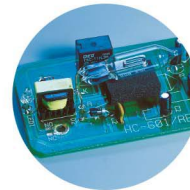
## Optional Items



External Control Interface Board



SmartBOX™



SmartGUARD™



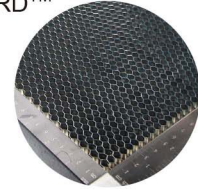
SmartBOX™ Cutting Accessory



Air Compressor Unit



Air Extraction System



Honeycomb Table

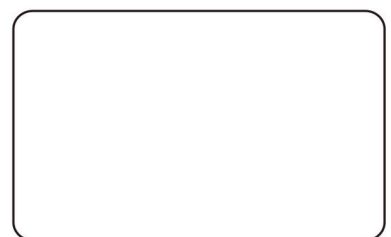
Specification		X380	
Model Name		X380RX	
Laser Source		80W	100W
		Sealed CO <sub>2</sub> Laser	
Cooling		Water Cool	
Working Area		38 x 24 in. ( 960 x 610 mm )	
Max. Part Size (W x L x H)	All doors closed	41 x 25 x 6.5 in. ( 1041 x 635 x 165 mm )	
	All doors open	41 x ∞ x 6.5 in. ( 1041 x ∞ x 165 mm )	
Table Size		42.7 x 29.5 in. ( 1085 x 750 mm )	
Dimensions		70.8 x 42.9 x 40 in. (1800 x 1092 x 1017 mm)	
Driver		Closed-loop DC servo control	
Maximum Cutting Speed*		40 IPS	
Speed Control		Adjustable from 0.1~100% ( Up to 16 color-linked speed settings per job )	
Power Control		Adjustable from 0~100% ( Up to 16 color-linked speed settings per job )	
Distance Accuracy		0.254 mm or 0.1% of move, whichever is greater	
Z-Axis Movement		Automatic	
Computer Interface		Standard printer port and USB 2.0** port	
Safety		Class I Laser Product Compliant with EN60825 Class II Laser Product Compliant with CDRH	
<b>Facility Requirements</b>			
Operation Voltage		200-240 Volt AC	
Power Consumption		1540W	
Water Chiller		Water Chiller required	
Air Exhaust System		External exhaust system required	

\* Speed does not equal to throughput. See dealer or visit [www.GCCworld.com](http://www.GCCworld.com) for more details.

\*\* File transmission at USB 2.0 Full Speed rate.

△ Specifications are subject to change without prior notice.

Authorized Dealer



[www.GCCworld.com](http://www.GCCworld.com)



GCC Headquarters	4F-1., No.236, Fude 2nd Rd., Xizhi Dist., New Taipei City 22151, Taiwan	886-2-6616-6692	Fax : 886-2-2694-6875
GCC China	No.1, Chen Feng Road, Yushan, Kunshan, Jiangsu 215300, China	86-512-5726-1515	Fax : 86-512-5726-1518
GCC Europe B.V.	Eglantierbaan 43-45, 2908 LV, Capelle a/d IJssel, The Netherlands	31-10-458-9367	Fax : 31-10-451-9874
GCC America, Inc	323 Paseo Tesoro, Walnut, CA 91789, USA	1-909-718-0248	Fax : 1-909-718-0251
		US & Canada Only	Toll Free: 1-888-284-5211